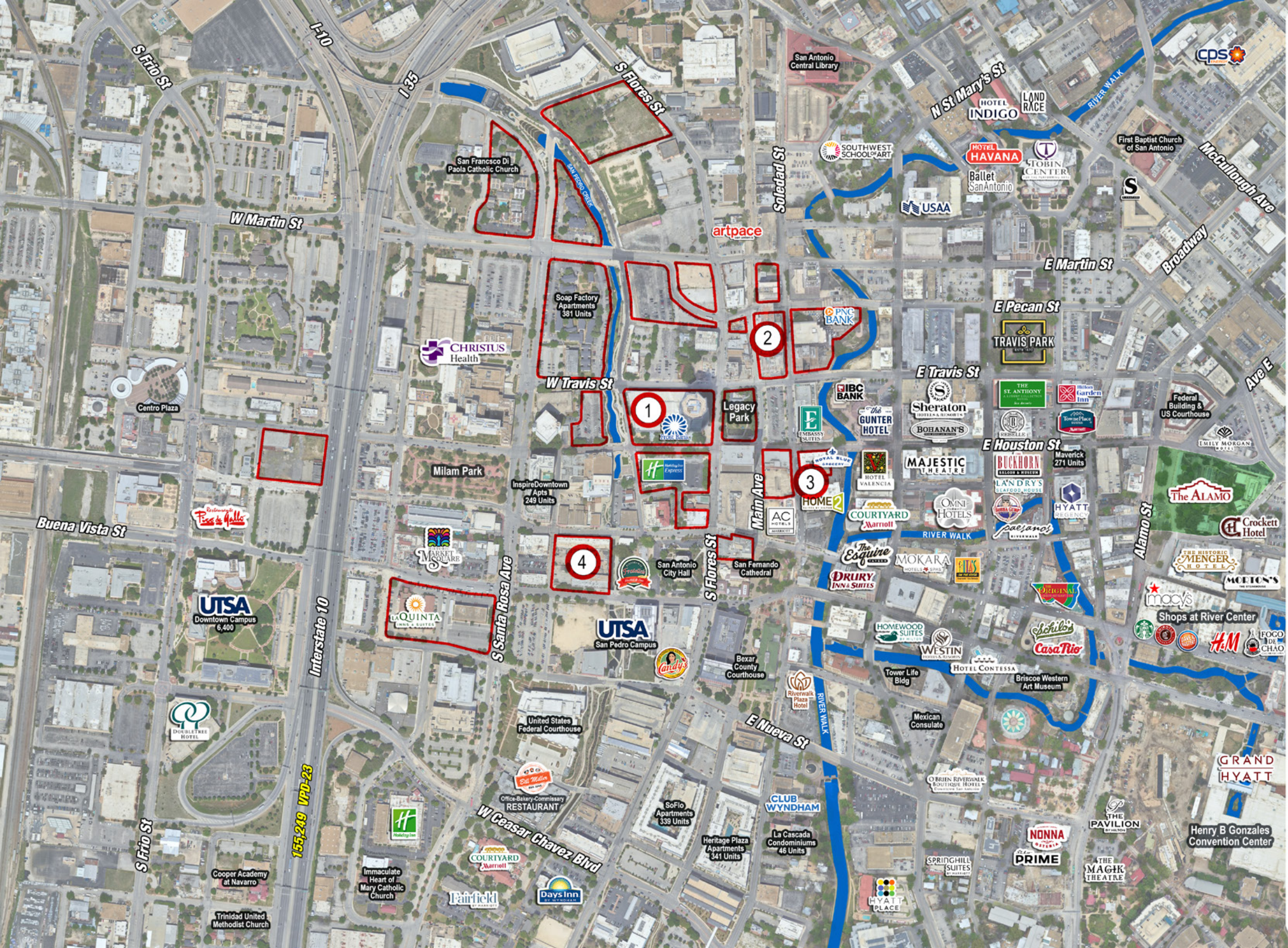


An aerial photograph of a dense urban area, likely downtown Los Angeles, showing a variety of buildings, streets, and parking lots. A prominent white hand-drawn circle is superimposed over the image, highlighting a specific building in the center. The text 'SAVOY BUILDING' is written in large, white, sans-serif capital letters across the middle of the circle.

# SAVOY BUILDING

SHOP cos.

WestonUrban



**1. Frost Tower**  
1,000 - 8,788 SF



**2. 300 Main**  
1,053 - 3,536 SF



**3. The Savoy Bldg**  
1,500 SF



**4. The Continental**  
1,200 - 7,637 SF

CLOSE UP

# WESTON URBAN PORTFOLIO

Reimagining Life and Development in Downtown San Antonio.

Weston Urban began in 2012 as an effort to attract and retain San Antonio's new generation of talent by reviving the city's center. With primary services in development, leasing, and lending, Weston Urban has helped to create and define the San Antonio skyline through both thoughtful historic redevelopment and strategic ground-up construction.

Weston Urban builds with a purpose – to cultivate human connection through a vibrant urban core where pedestrian-friendly business, recreation, public spaces, art and culture attract the talent of today and tomorrow.

**36** PROPERTIES    **1.5M** SQUARE FEET    **35** TOTAL ACRES

# OPPORTUNITIES

## 1 FROST TOWER | 111 W Houston

- RETAIL 1: 4,333 SF [divisible]
- RETAIL 2: 8,788 SF [divisible]
- RETAIL 3: 3,465 SF

## 2 300 MAIN | 300 Main Ave

- AVAIL: 3,536 SF
- AVAIL: 1,053 SF

## 3 SAVOY BUILDING | 116 E Houston

- AVAIL: 1,500 SF

## 4 THE CONTINENTAL | 322 W Commerce

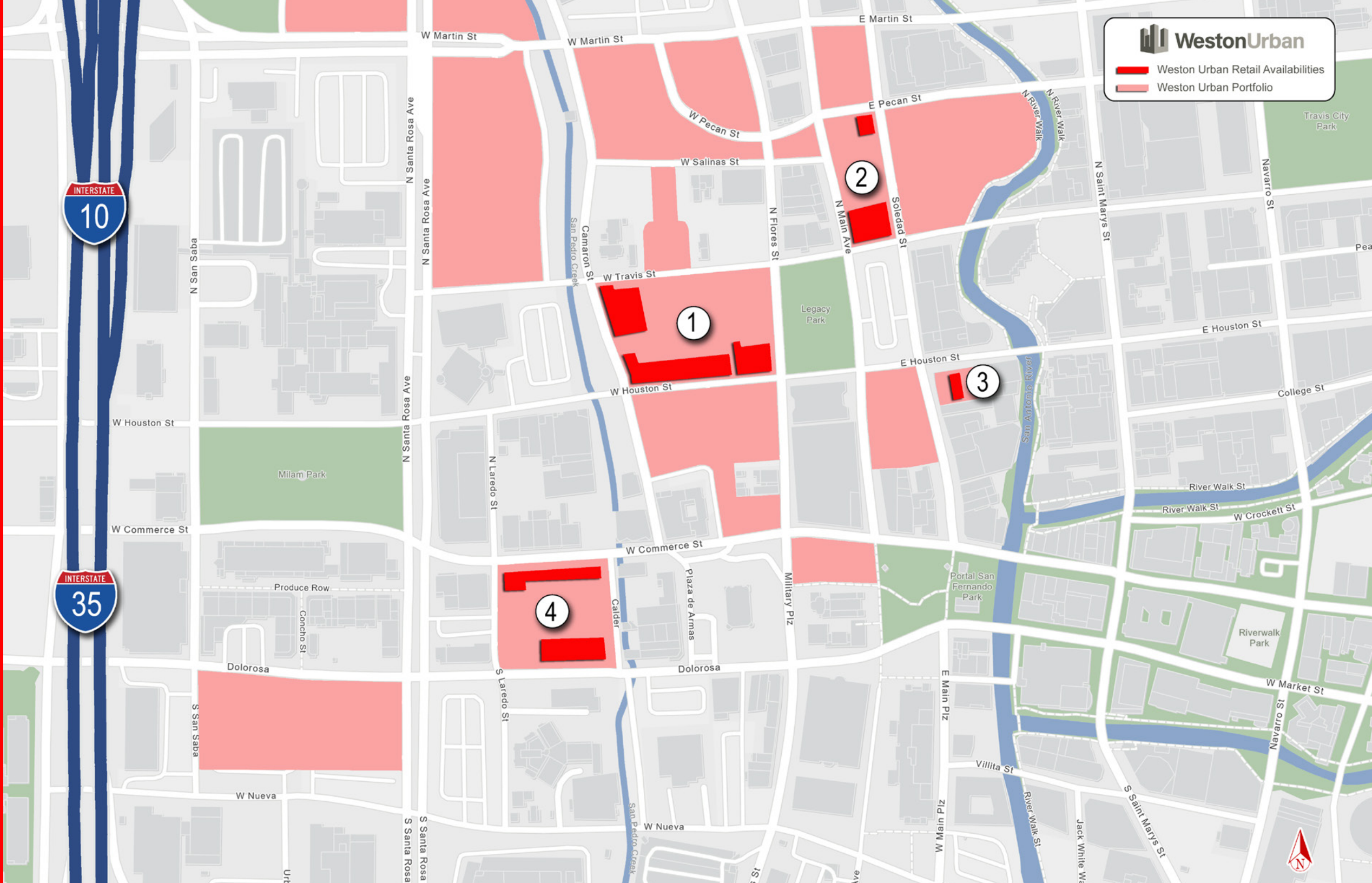
### THE ARANA

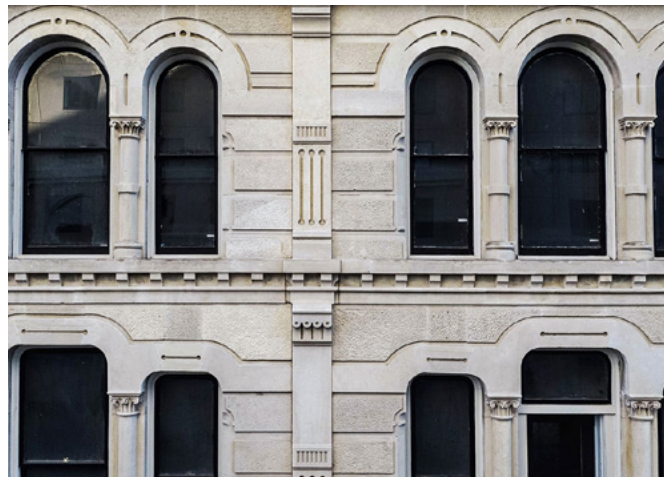
- 1ST FLOOR: 2,528 SF & 3,055 SF
- 2ND FLOOR: 6,480 SF

### THE CONTINENTAL

- 1ST FLOOR: 6,821 SF [divisible] & 3,193 SF

# SITE PLAN





# SAVOY BUILDING

Originally established as the Savoy Hotel in 1912, The Savoy Building amalgamates three distinct structures, showcasing the architectural brilliance of Alfred Giles, a renowned figure in San Antonio's history. The building offers a unique blend of historic charm and modern functionality. The upper floors have been thoughtfully repurposed into creative office spaces, while the street level beckons retail tenants seeking to immerse themselves in a rich historical ambiance, amidst a highly desirable urban landscape.





SHOP<sup>COS.</sup>

---

*Kevin Clements*

711 BROADWAY, SUITE 120, SAN ANTONIO, TX 78215

KEVIN@SHOPCOMPANIES.COM

210-985-7291 (DIRECT)

210-985-7323 (OFFICE)

*Robby Grubbs*

711 BROADWAY, SUITE 120, SAN ANTONIO, TX 78215

ROBBY@SHOPCOMPANIES.COM

210-985-7646 (DIRECT)

210-985-7323 (OFFICE)

*Zach Fregosi*

711 BROADWAY, SUITE 120, SAN ANTONIO, TX 78215

ZACH@SHOPCOMPANIES.COM

210-985-7116 (DIRECT)

210-985-7323 (OFFICE)